

U48-4 OPTIONS

STANDARD EQUIPMENT

Safety system

- Engine start safety system
- Travel motor with disc brake
- Swivel motor with disc brake
- All hydraulic control

Working equipment

- Auxiliary circuits 1 and 2
- 2 working lights on cab and 1 light on the boom
- Canopy lights
- Travel alarm
- Float blade

Operator's space

- ROPS/OPG (Top Guard Level I) canopy and cab
- Weight-adjustable full suspension seat
- Retractable seat belt
- Hydraulic pilot control levers with arm rests
- Travel levers with foot pedals

- Two pattern selection system
- Digital panel
- 12V power source
- Cup holder
- Horn

Engine/Fuel system

- Double element air filter
- Auto idling system
- Water separator with drain cock

Undercarriage

- 400 mm rubber track
- 1 × upper track roller
- 4 double-flange track rollers on each side
- 2-speed travel switch on dozer lever
- 2-speed travel with auto-shift

Hydraulic system

- Pressure accumulator
- Hydraulic pressure checking ports
- Straight travel circuit

- Third line hydraulic return
- 1-pump load sensing system
- Adjustable maximum oil flow on auxiliary hydraulic circuits 1 and 2

Others

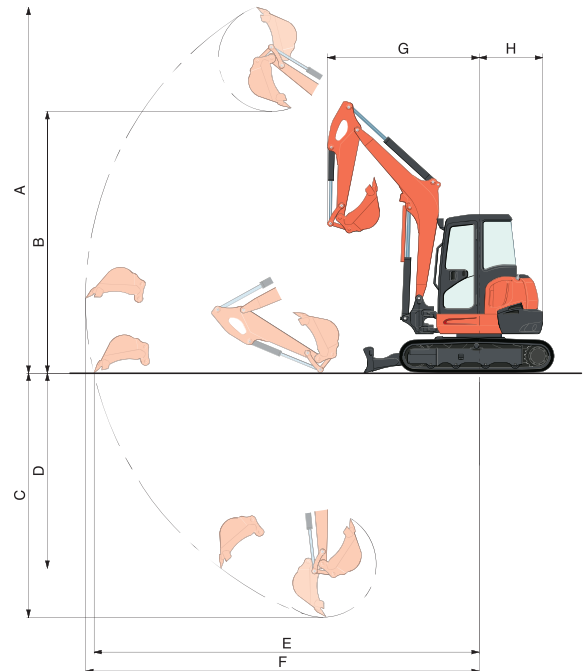
- Tool box
- Grease gun holder
- Pre-cleaner

OPTIONAL EQUIPMENT

- Cab with A/C
- Rear working lights
- Beacon lights

WORKING RANGE

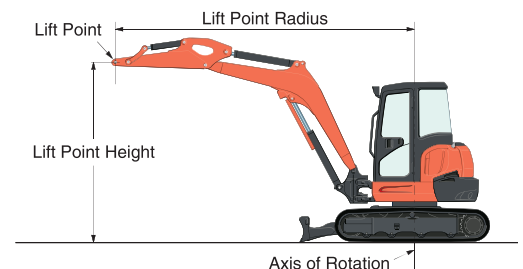
Model		U48-4		
A	Max. digging height	mm	5440	
B	Max. dumping height	mm	3770	
C	Max. digging depth	mm	3380	
D	Max. vertical digging depth	mm	2670	
E	Max. digging radius at ground	mm	5710	
F	Max. digging radius	mm	5850	
G	Min. turning radius	W/O swing	mm	2390
		W swing	mm	1960
H	Min. tail turning radius	mm	990	



LIFTING CAPACITY

LIFT POINT HEIGHT (m)	LIFTING CAPACITY OVER-FRONT BLADE DOWN unit = kg			LIFTING CAPACITY OVER-SIDE unit = kg		
	LIFT POINT RADIUS (m)			LIFT POINT RADIUS (m)		
	3	4	MAX	3	4	MAX
3	—	790	810	—	640	500
2	1190	910	820	960	610	430
1	1610	1070	850	880	580	410
GL	0	1750	1150	880	560	430

Machine with canopy and rubber crawler, without bucket



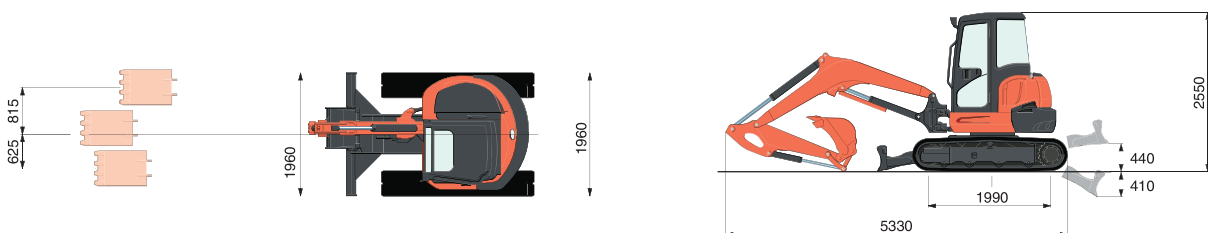
SPECIFICATIONS

Model		U48-4		
Type of ROPS / OPG (Top Guard Level I)*		Canopy / Cab		
Type of tracks		Rubber / Steel		
Engine	Model	Kubota V2607-DI		
	Output (SAEJ 1995 gross)	HP (kW) / rpm	41.8 (31.2) / 2200	
	Output (SAEJ 1349 net)	HP (kW) / rpm	40.2 (30.0) / 2200	
	Displacement	cc	2615	
Dimensions	Overall length	mm	5330	
	Overall height	Canopy / Cab	mm	2550 / 2550
	Overall width	mm	1960	
	Min. ground clearance	mm	310	
Hydraulic system	Pump capacity	ℓ /min	118.8	
	Auxiliary hydraulic flow	Left / Right	ℓ /min	37 / 70
	Max. breakout force	Bucket / Arm	kgf	3360 / 2245
Drive system	Travel speed	Rubber Low / High	km/h	2.8 / 4.9
		Steel Low / High	km/h	2.6 / 4.6
	Max. traction force	Low speed	kgf	5440
	Tumbler distance	mm	1990	
	Crawler length	mm	2500	
	Shoe width	Rubber / Steel	mm	400
	Ground contact pressure	Rubber Canopy / Cab	kPa	26.9 / 27.4
Steel Canopy / Cab		kPa	27.4 / 27.9	
Swing system	Unit swing speed	rpm	9.3	
	Boom swing angle	Left / Right	degree	70 / 55
Blade	Dimensions	Width	mm	1960
		Height	mm	410
	Max. lift above ground	mm	440	
	Max. drop below ground	mm	410	
Hydraulic oil (Reservoir / System)		ℓ	45 / 79	
Fuel reservoir		ℓ	68	
Operating weight (Including operator's weight @ 75 kgs)	Rubber	kgs	4760 / 4850	
	Steel	kgs	4845 / 4935	

* OPG (Top Guard Level I) in accordance with ISO10262 is equivalent in definition to FOPS (Falling Object Protective Structure).

The company reserves the right to change the above specifications without notice. This brochure is for descriptive purposes only. Please contact your local Kubota dealer for warranty information. For your safety, Kubota strongly recommends the use of a Rollover Protective Structure (ROPS) and seat belt for almost all applications.

DIMENSIONS



Unit: mm

©2013 Kubota Corporation



KUBOTA Tractor Australia Pty Ltd

25-29 Permas Way, TRUGANINA Vic, 3029
 Freecall: 1800 334 653
 Email: sales@kubota.com.au

Web Site: <http://www.kubota.com.au>

CB Norwood Distributors Ltd

PO Box 1265, 888 Tremaine Avenue,
 Palmerston North 0800 KUBOTA
 Tel: 06 356 4920 Fax: 06 356 4939

Web Site: <http://www.kubota.co.nz>