

GRADEWELL GROUP



2020

www.gradewellgroup.co.uk

Tel: 01753 654 149



HS2



GRADEWELL

New to the fleet

www.gradewellgroup.co.uk

Kobelco-SK210H

Hybrid Machine

Operating weight:
22,100 - 23,100kg
Engine rated power:
124 kW (166 HP)
Bucket capacity: 0.8m³



Hitachi-Zaxis 170W

Wheeled Excavator

Operating weight:
17,000 - 19,100kg
Engine rated power:
122 kW (164 HP)
Backhoe Bucket ISO
Heaped: 0.52 - 0.82m

Manitou-MT625H

Rough Terrain Telehandler

Operating weight:
4800Kg
Engine rated power:
55.4 kW (75 HP)
Maximum Lifting Capacity 2500Kg
Maximum Lifting height 5.85m



Volvo-FH 16 750

Tractor Unit

Max Operating weight:
80,000Kg
Payload:
48,000Kg
Engine Rated Power:
559kW (750 HP) 3550 Nm Torque
Category:
STGO cat2 80 Tonne

UK, Ireland & European Coverage

www.gradewellgroup.co.uk

SUPPORT YOU CAN RELY ON

With our team 100+ Staff, we provide coverage to any part of the UK and Ireland.

We take pride in having a well maintained modern fleet, backed by an expert team to keep our machines in optimum working order and delivering on time.



Large Fleet of:
Response Units
Mobile Welders
Lorries



Excavators - Dumpers - Telehandlers Bob Cat/Skid Steers - Rollers

Excavators

- Tracked 0.8 to 50 Tonne
- Wheeled 9 to 22 Tonne
- Long reach 13 to 40 Tonne



Dumpers

- Straight 1 to 10 Tonne
- Swivel 1 to 10 Tonne
- Tracked 3 to 10 Tonne
- Up to 30 Tonne Articulated



Telehandlers

From 6 to 20 Meters



Rollers

From 80cm to 216cm



Bobcat - Tracked /Skid Steer

From 3 to 8 Tonne



HITACHI
CAT

KOBELCO
BOMAG

MANITOU
HANDLING YOUR WORLD
Bobcat

KOMATSU
TEREX

Attachments

Hydraulic Breakers

1.5 to 35 Tonne



Ripper Teeth

1 to 8 Tonne



Hydraulic Compactor Plates

13 to 15 Tonne



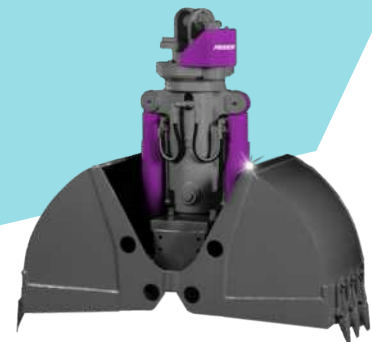
Hydraulic Selector Grabs

- 8 Tonne
- 13 to 14 Tonne
- 20 to 25 Tonne
- 35 Tonne



Extendable Clamshell Grab

- 13 Tonne
- 20 Tonne
- 35 Tonne



Hydraulic Pulverisors

- 5 Tonne - Knock Around
- 8 Tonne - Knock Around
- 13 to 14 Tonne - Rotating
- 20 to 25 Tonne - Rotating
- 30 Tonne - Static



Attachments

Piling Hammer

- Tracked 0.8 to 50 Tonne
- Wheeled 9 to 22 Tonne
- Long reach 13 to 40 Tonne



Mechanical Munchers

- 13 to 14 Tonne
- 20 to 25 Tonne



Augers

- 5 Tonne
- 8 Tonne
- 13 Tonne
- 20 Tonne



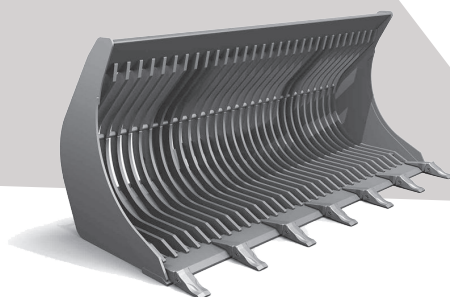
Obstruction Probe

- 13 to 14 Tonne
- 20 to 25 Tonne



Griddle/Sorting Bucket

- 8,5 Tonne
- 13 to 14 Tonne
- 20 to 25 Tonne
- 35 Tonne



Piling Cropper

- 3 Jaw
- 4 Jaw





GRADEWELL **PLANT HIRE**

www.gradewellgroup.co.uk

Telephone (UK) - 01753 654 149 Email - hiredesk@gradewellgroup.co.uk

Head Office (UK)

Gradewell Plant and Haulage Ltd (UK)
Gradewell Yard Unit 14A
Thorney Business Park
Thorney Lane North
Iver SL0 9HF

Head Office (Amsterdam)

Gradewell Plant and Haulage Ltd B.V.
Kraijenhoffstraat 137a
1018RG Amsterdam
Netherlands
Tel: +31202 444301

Head Office (Dublin)

Gradewell Plant and Haulage Ltd (Ire)
Dublin Yard
Co. Dublin
Tel: +353 (0)1546 1095